

# SPARE PARTS SECTION

## English Wheels Model. EWM-75

Order Code S225

*Edition No* : EWM-75-1

*Date of Issue* : 02/2021

The following section covers the spare parts diagrams and lists that were current at the time this manual was originally printed. Due to continuous improvements of the machine, changes may be made at any time without notification.

### HOW TO ORDER SPARE PARTS

1. Have your machines **model number, serial number & date of manufacture** on hand, these can be found on the specification plate mounted on the machine
2. A scanned copy of your parts list/diagram with required spare part/s identified.

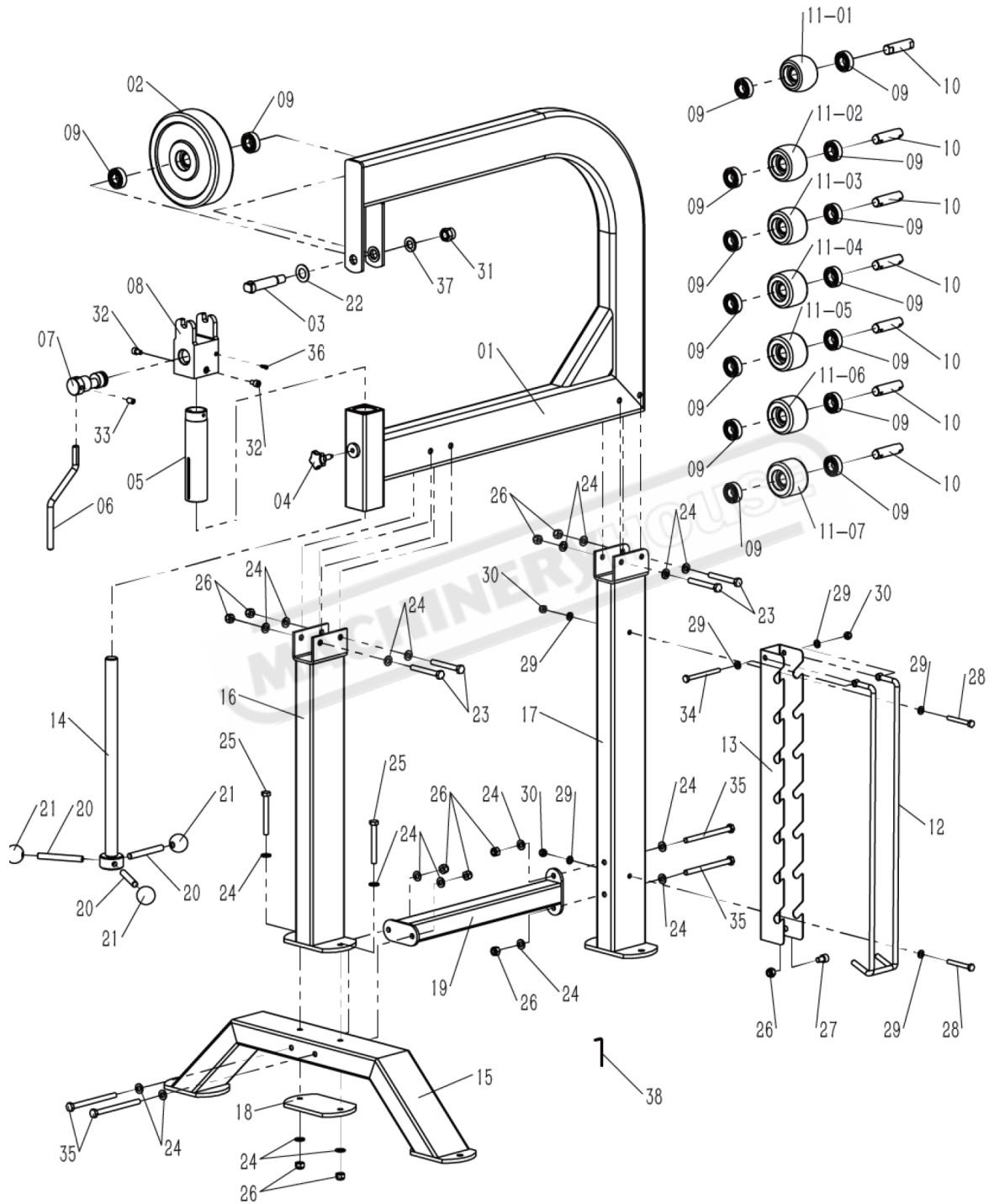
**NOTE: SOME PARTS MAY ONLY BE AVAILABLE AS AN ASSEMBLY**

3. Go to [www.machineryhouse.com.au/contactus](http://www.machineryhouse.com.au/contactus) and fill out the inquiry form attaching a copy of scanned parts list.

### CONTENTS

Spare Parts Diagram.....	13
Spare Parts List.....	14

### SPARE PARTS DIAGRAM



### SPARE PARTS LIST

ITEM	DESCRIPTION	QTY.	ITEM	DESCRIPTION	QTY.
1	FRAME	1	17	BACK STAND	1
2	TOP DIE	1	18	PLATE	1
3	SHAFT	1	19	LINK BRACKET	1
4	KNOB	1	20	HANDLE LEVER	3
5	STEEL TUBE	1	21	HANDLE BALL	3
6	HANDLE	1	22	WASHER 20MM	1
7	ECCENTRIC SHAFT	1	23	BOLT M10X80	4
8	BOTTOM DIE YOKE	1	24	WASHER 10MM	20
9	BEARING	16	25	BOLT M10X85	2
10	SHAFT	7	26	NUT M10	11
11-01	BOTTOM DIE 50.8MM/2"	1	27	SCREW M10X15	1
11-02	BOTTOM DIE 76.2MM/3"	1	28	BOLT M8X65	2
11-03	BOTTOM DIE 101.6MM/4"	1	29	WASHER 8MM	6
11-04	BOTTOM DIE 152.4MM/6"	1	30	NUT M8	3
11-05	BOTTOM DIE 203.2MM/8"	1	31	NUT M16	1
11-06	BOTTOM DIE 304.8MM/12"	1	32	SCREW M8X12	2
11-07	FLAT DIE	1	33	SCREW M10X16	1
12	LOCK BRACKET	1	34	BOLT M8X95	1
13	BOTTOM DIE RACK	1	35	BOLT M10X130	4
14	THREAD ROD	1	36	SCREW M4X12	1
15	FRONT STAND	1	37	WASHER 16MM	1
16	FRONT TUBE	1	38	HEX KEY WRENCH 3MM	1

**NOTE: SOME INDIVIDUAL PARTS MAY ONLY BE AVAILABLE AS AN ASSEMBLY**